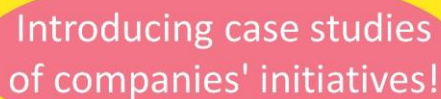




Protect, nurture, and connect  
the forests of Hokkaido  
and our future.

# Corporate Forest Development in Hokkaido Guide Book



Introducing case studies  
of companies' initiatives!



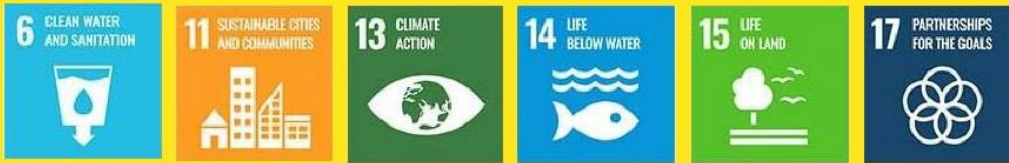
Corporate activities that lead to CSR activities and ESG investment are currently getting attention.

As various factors that threaten the sustainability of human society, such as environmental pollution, human rights issues, and natural disasters, are becoming apparent, companies themselves must contribute as a member of society in order for them to continue to exist in the future. In addition, activities that benefit the environment and society = CSR activities and ESG investment are also one of the essential activities for corporate growth, such as improving corporate value, raising employee awareness, and discovering new business opportunities.

In Hokkaido, in light of the recent increase in environmental awareness among companies, etc., we are promoting activities to enhance the diverse roles of forests through forest development in cooperation with Hokkaido residents and companies.

Forest conservation activities such as tree planting through forest maintenance lead to environmental contributions and strengthening relationships with local residents, which is one of the goals of the SDGs, "Life On Land". An increasing number of companies are using sustainable activities to improve their corporate image and contribute to the environment, society and employees.

Contribute to the environment, society, employees, and the future through "Corporate Forest Development in Hokkaido".



### What is "Corporate Forest Development in Hokkaido"?



We match companies/organizations with forest owners.

# Outline of the institution

Target forest	a private forest (Privately owned forests, Municipal forests, Hokkaido forests) ※Limited to target forests for regional forest plans based on Article 5 of the Forest Act ※Certain conditions must be met, such as no mortgage ※It is not possible to cut down trees or sell forests for a certain period of time after forest maintenance by a company.		
Creating a forest maintenance plan	Required (Must comply with the municipal forest maintenance plan)	Forest usage fee	free of charge
Principle prohibition of felling standing trees	Required (Excluding clearing and thinning)	Attribution of Ownership of Standing and Planted Trees	forest owners
Obligations during the forest maintenance period	(1)Obligations of companies ①duty of good care ②Respect for advice and guidance from Hokkaido, municipalities, etc. ③Development based on forest maintenance plan ④Prohibition of suspension of forest maintenance without justifiable reason (2)Obligations of forest owners ①Prohibition of refusal of entry by forest maintenance workers and related parties without justifiable reasons ②During the term of the agreement, in principle, prohibition of disposal of standing trees such as felling and trading ③Prohibition of lending of mortgages and superficies to third parties during the term of the agreement		
Obligations after completion of forest maintenance	(1)Prohibition of logging and trading of forests for more than 10 years (2)In the event that the obligation cannot be fulfilled, consult with the forest maintenance worker and return the corresponding costs.		

## Flow of implementation (example)



See the next page for examples of corporate initiatives!

## Q&A

Other Q&A is introduced here>>



**Q. How much does forest maintenance cost?**

**A.** For example, planting larch trees on 0.5ha and cutting undergrowth (mowing weeds, etc.) for 5 years will cost about 1 million yen to 2 million yen. This is the cost of hiring a contractor to secure seedlings and care for them (cutting undergrowth twice a year for 5 years). The amount will increase or decrease depending on the area, place, time of planting, type of seedlings, etc.

**Q. Is there a fixed period for forest maintenance?**

**A.** Although it depends on the content of the initiative, it generally takes about 5 to 10 years. For example, if trees are planted for only one year, undergrowth will be cut for five years, so the agreement period is five years. If tree planting is to be carried out in 5 years, the agreement will be for 10 years including the undergrowth cutting period.

**Q. Is it possible for the company to give a name to the forest that is being maintained and display the name on the forest?**

**A.** Companies, etc. can name the forests they maintain and install signboards with the names of the forests and companies. In addition, when using the corporate version of hometown tax to develop forests, it is not possible to name the forest or install a sign because it is a benefit to a specific company.

**Q. I can't do all forest maintenance at my company...**

**A.** Work that is difficult for a company to carry out can be outsourced to a forestry business entity such as the Forest Owners' Co-operative Association. It is also possible to outsource all work, including tree planting.

# Coop Sapporo

## Main Initiatives in "F Forest"

**A**  Creating a forest designed by citizens

**B**  Exchange with coordinators and organizations

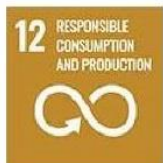
**C**  Forest development born from workshops



Creating forests that contribute to the future 100 years from now



[Location] All 16 districts (F Forest is Tobetsu town)  
 [Area] about 33 hectares  
 [Agreement period] 2008-ongoing  
 (15 years \*as of July 2022)



### Company Voice

It is "F Forest" which is evaluated as a unique forest creation.

©Coop Future Forest Development Fund  
 Executive Director / Kyosuke Sakai



Against the background of the Toyako Summit and the charging of plastic bags, the CO-OP Future Forest Development Fund was established in 2008 with the aim of preventing global warming and preserving the environment. At the same time, we signed an agreement with Hokkaido and started the forest development at Tobetsu Town's Domin no Mori.

As of July 2022, forest development activities are being carried out in 16 districts across Hokkaido, and the Domin no Mori has been highly evaluated as a unique forest development project based on the theme of "forest development by citizens."

### Report Booklet



Since 2011, the report magazine "Moriiku" has been published twice a year. It has become a public relations medium that attracts interest in the forest.

### Exchange

Many real-time supporting citizens (a feature is collaboration with organizations) and advice su...



### Effects / reactions

Creating a forest that fosters continuous involvement and the growth of participants

More than ten years have passed, and a total of about 40,000 people have participated in events in each district, and the number of trees planted has exceeded 100,000. In particular, in the "F Forest", citizens are continuously involved in creating and nurturing the forest, and the participants grow along with the forest.

In addition to forest development, Coop Sapporo is engaged in various environmental activities and support, and it will continue to be important for us to contribute to a sustainable and prosperous life in Hokkaido through these activities. I hope that...

For more detailed information, please visit the web media "People, Life, and Work in Hokkaido. Kurashigoto"! >>>



Connect  
from now.



## Creating a forest designed by citizens① Citizens create forests at "F Forest"

"F" is a name that we all discussed and gave it with the meaning of revival (Revival is pronounced "Fukkatsu" in Japanese.), family, forest, fan (enjoyment), and friendly (friendship). Place names such as "Lark Hills" and "Dokkan Bridge" in the forest were also named by local residents after walking through the area.



## Creating a forest designed by citizen② Plant suitable trees and watch them grow

Many kinds of trees are planted in "F Forest", however, they are planted according to the natural vegetation and ecology of the trees based on the topography and history of the land. In general tree-planting festivals, etc., it is often the case that the tree is planted and then finished, in "F Forest", the planted trees are revisited and even "tree-raising" work is carried out for the trees to grow. For this reason, the citizens involved in forest development have a very deep passion for the "F Forest."

## Work with coordinators and organizations

Assuring coordinators are making the forest creation by amateurs). Another major reason is that it is made up of partnerships with companies and organizations that provide specialized services such as surveys and guidance.

### Morizukuri Coordinator



NPO Morinet  
Hokkaido  
Representative/  
Maki Yamamoto



Snow Brand Seed Co.,  
Ltd. Environmental  
Greening Department  
Greening Business  
Section  
Manager / Koji Kimura



NPO Hokkaido Citizen  
Environmental Network  
Director / Akira Suzuki



## Forest development born from workshops

Tree planting is essential for forest development. Usually, experts select the seedlings, however in "F Forest", participants who are interested in nature and forest development actually walk in the forest and think indoors by looking at the map. Finally, kind seedlings is determined through the workshop.

About 20 kinds of trees are planted every year, and the "F Forest" is designed by citizens (amateurs).

000  
e  
ar,  
ating  
with  
ed  
able  
feel

# Japan Tobacco Inc.

Main Initiatives in "JT Forests"

Together with Shakotan Town, "To the water source forest that nurtures the sea".



**A** Forest maintenance

**B** Forest development day (Practice and experience of conservation activities)

**C** Regional development through forest utilization



[Location] Shakotan town, Shakotan-gun, Hokkaido  
[Area] about 350 hectares  
[Agreement period] Phase 1: 2010 to 2020 (10 years)  
Phase 2: 2021-2026 (5 years)



## Forest maintenance

Total of 132 hectares / thinning, renewal felling, planting, undergrowth cutting, etc.

### Company Voice

We are grateful for the blessings of nature that support our business.

©JT Hokkaido Branch Office Strategy Liaison Team  
Manager / Shintaro Nakajo



### Effects / reactions

## Newly established "regional promotion" Toward sustainable efforts

From the second phase, we have asked business partners and local residents to participate in forest conservation activities such as tree planting and childcare. We are very happy to have these new connections. Also, through these activities, we would like to convert from CSR to SDGs and work towards the development of sustainable local communities.

As part of our efforts to conserve the natural environment, we are working on activities to nurture and protect forests nationwide called "JT Forests." When we started our activities in Hokkaido, we used the system of "Hokkaido Corporate Forest Development". The JT Group's business is centered on tobacco, pharmaceuticals, and processed food businesses, and we use raw materials derived from nature, mainly plants, such as leaf tobacco, paper, and vegetables. We are grateful for the blessings of nature that support our business, and we are promoting forest conservation activities with the desire to continue to cherish the natural environment.

For more detailed information, please visit the web media "People, Life, and Work in Hokkaido. Kurashigoto"! >>>



## Regional development through forest utilization① Effective utilization of forests in collaboration with Shakotan Gin, a new local specialty

Collaborating with Shakotan Spirit Co., Ltd. to collect botanical raw materials and disseminate the charm of Shakotan



## Regional development through forest utilization② Holding local environmental education for local residents in Shakotan Town

Offering opportunity to learn the local natural environment from the connection of forest, river and sea.



## Regional development through forest utilization④ Collaboration between forest activities and tourism

Creation using forests and provision of forest activities (e.g. saunas, motorbikes) to increase change population and revitalize local communities



Interior that makes effective use of larch thinnings from JT Forest Shakotan

## Regional development through forest utilization④ Promoting the utilization of thinned wood, etc.



SDGs badge made from thinned wood from JT Forest Shakotan

### Mayor Voice



It is an initiative to create forests for the future that will drive regional revitalization.

©Mayor of Shakotan Town / Hideki Matsui

Shakotan is close to the Chitose and Sapporo areas and is surrounded by rich nature of forests, rivers and the sea. The bounty of the forest has nurtured a rich sea called "Shakotan Blue".

In addition to forest maintenance, JT Forest is a field where JT employees, their families, and local residents can learn the importance of the natural environment from the nature around them. In addition to this, I would like to make it a place for efforts to revitalize the region by creating forests for the future.

Taking advantage of the location where the flow from the water source to the sea is completed within the town, we are taking on the challenge of learning and revitalizing the region through the circulation of "forest, river, and sea."

## Forest development day

Number of times held: 17

Number of participants: about 2,600

\*From 2010 to 2020 (total)





# Corporate Forest Development in Hokkaido Promotion Council

From 2022, a new “Corporate Forest Development in Hokkaido Promotion Council (members : Forestry Agency Hokkaido Forest District Department, Municipalities, Forestry related organizations, Companies, Hokkaido Government)” was established. In order to further expand the number of participating companies and the area of forest development, the council is promoting initiatives in collaboration and cooperation with related organizations.

**We promote matching between companies and forest owners by exchanging information more closely than ever before!**

We conduct surveys of candidate sites for afforestation, site visits, examinations, meetings, etc. We provide full support, including administrative work for concluding agreements, assistance with holding agreement signing ceremonies, and management of forest development.

**We train advisors for forest development!**

Municipal staff, forestry union staff, and people involved in companies (Mokuiku masters, etc.) who are "volunteers who are familiar with the local area and can give advice on forest development" are placed as contact points in charge of the region, making it easier to consult, and tidy up the environment.

**We focus on information dissemination and public relations related to forest development!**

We create pamphlets introducing case studies, offer information on SNS, and also promote by exhibiting event booths in the metropolitan area to attract companies from outside Hokkaido.



For inquiries about Corporate Forest Development in Hokkaido, please contact:

Forest Utilization Division, Forest Environment Bureau,  
Fisheries and Forestry Department, Hokkaido Government

**TEL** 011-204-5516 **FAX** 011-232-4142

**Email** [suirin.katsuyo2@pref.hokkaido.lg.jp](mailto:suirin.katsuyo2@pref.hokkaido.lg.jp)

Homepage about  
Corporate Forest Development in Hokkaido >>



[Editing/Production/Printing]

HAI Ltd. Hokkaido Arbite Information Company,  
Kurashigoto Editorial department